

# Technical Bulletin

## Solder Pots

### 100-4C Lead Free Solder Pot

- Closed-loop sensor controls temperature. Zero triggering without polluting the operating voltage.
- Adopts anti-erosion and heat resistant alloy materials;
- Long life time; Suitable for lead free applications.)

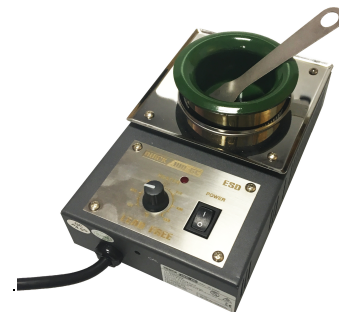
<b>Heating Power</b>	200 Watt
<b>Temperature Range</b>	150-500°C
<b>Temperature Stability</b>	+5°C
<b>Outer Dimensions</b>	150(L) x 91(W) x 75(H)mm
<b>Weight</b>	approx. 400g
<b>Pot Material</b>	Titanium Alloy
<b>Pot Size</b>	36mm Dia. x 40mm Deep



### 100-6CA Lead Free Solder Pot

- Closed-loop sensor controls temperature. Zero triggering without polluting the operating voltage.
- Adopts anti-erosion and heat resistant alloy materials
- Long life time; Suitable for lead free applications.
- Improved Internal Element

<b>Heating Power</b>	200 Watt
<b>Temperature Range</b>	150-500°C
<b>Temperature Stability</b>	+5°C
<b>Outer Dimensions</b>	150(L) x 91(W) x 75(H)mm
<b>Weight</b>	approx. 400g
<b>Pot Material</b>	Titanium Alloy
<b>Pot Size</b>	36mm Dia. x 40mm Deep



The information contained herein is based on data considered accurate and is offered at no charge. No warranty is expressed or implied regarding the accuracy of this data. Liability is expressly disclaimed for any loss or injury arising out of the use of this information or the use of the materials designated.

[solderconnection.com](http://solderconnection.com)

Unit 5 | Severn Link Distribution Centre  
Chepstow | Monmouthshire | NP16 6UN

sales@solderconnection.co.uk  
Office: 01291 624 400

Revision No: 2  
Revision Date: 25/01/26